



June 10th, 2017  
1:00pm PST



[www.feylonghorns.com](http://www.feylonghorns.com)

# CONSIGNORS

## 1. A&S Land & Cattle

Scott Picker & Amelia  
Caruso-Picker  
17205 NE Fairview Drive  
Dundee, OR 97115  
[www.aandslandandcattle.com](http://www.aandslandandcattle.com)  
Lots: 19, 20

## 2. Bishop Scott Ranch

Travis & Nicole Watson  
PO Box 3492  
Hillsboro, OR 97123  
Lots: 33, 34

## 3. Caballo Bravo Longhorns

Warren & Cathy Dorathy  
17824 Watts Valley Road  
Sanger, CA 93657  
Lots: 7, 8, 27, 28

## 4. CR Ranches

Alex Dees & Eric Youngberg  
3122 Harper Westfall Road  
Harper, OR 97906  
[www.crlonghorns.com](http://www.crlonghorns.com)  
Lots: 5, 6, 24, 25, 44, 45

## 5. Easton Jane

Mark & Sally Torres  
P.O. Box 1505  
Snoqualmie, WA 98065  
[www.eastonjane.com](http://www.eastonjane.com)  
Lots: 13, 14, 40

## 6. Fey Longhorns

Daniel & Angelina Fey  
PO Box 159  
Yamhill, OR 97148  
[www.feylonghorns.com](http://www.feylonghorns.com)  
Lots: 3, 4, 17, 18, 31, 32,  
43, 44

## 7. J5 Longhorns

Ed & Sheryl Johnson  
12037 S Fox Road  
Molalla, OR 97038  
Lot: 43

## 8. Judy Wilson

P.O. Box 2014  
Dale, OR 97880  
Lot: 15

## 9. Lucas Ranch

Mike & Cattrina Lucas  
PO Box 20445  
Bakersfield, CA 93390  
[www.lucasranch.net](http://www.lucasranch.net)  
Lot: 16

## 10. Rod & Kelly Olsen

8113 N 4000 W  
Roosevelt, UT 84066  
Lots: 9, 10, 37, 38

# CONSIGNORS

## 11. Panther Creek Ranch

Lorinda Beal Valentine  
P.O. Box 1269  
Aledo, TX 76008  
Lot: 29

## 12. Ridge-Point Longhorns

Justin Risenmay  
7840 SW 61<sup>st</sup> Street  
Redmond, OR 97756  
[www.ridgepointlonghorns.com](http://www.ridgepointlonghorns.com)  
Lots: 39, 47

## 13. Rocking F Ranches

Greg & Amy Franks  
365 N Cardinal Rd.  
Azle, TX 76020  
Lot: 26

## 14. Running N Longhorns

Nick & Shilo Noyes  
2316 Hwy 30 W  
Fruitland, ID 83619  
[www.runningnlonghorns.com](http://www.runningnlonghorns.com)  
Lot: 46

## 15. Scott Ranch

Mark & Renee Scott  
P. O. Box 1366  
Hines, OR 97738  
[www.srlonghorns.com](http://www.srlonghorns.com)  
Lot: 21

## 16. St. Hilaire Longhorns

Tom & Molly St. Hilaire  
PO Box 11  
Yamhill, OR 97148  
[www.sthilaieranch.com](http://www.sthilaieranch.com)  
Lots: 1, 2

## 17. Struthoff Ranch

Lynn Struthoff & Josie  
Becker  
9660 FM 1863  
San Antonio, TX 78266  
[www.struthoff-ranch.com](http://www.struthoff-ranch.com)  
Lot: 30

## 18. WannaBA Ranch

Ken Webb  
933 East Bates Canyon Rd.  
Erda, UT 84074  
[www.wannabaranchlonghorn.com](http://www.wannabaranchlonghorn.com)  
Lots: 11, 12, 35, 36

## 19. WB Longhorns

William & Barbara McKinney  
P.O. Box 272  
Arlington, OR 97812  
[www.wblonghorns.com](http://www.wblonghorns.com)  
Lots: 22, 23

**FEY LONGHORNS - SALE LOCATION**  
**11496 NW PIKE ROAD**  
**YAMHILL, OR 97148**  
**2.5 MILES OUT PIKE RD. ON THE RIGHT**

***SCHEDULE***

**Thursday**

- 8am-8pm cattle arriving, call to schedule Daniel 503.349.7866 or Angelina 503.537.8962

**Friday**

- 7am-9:30am cattle arriving, call to schedule
- 9:30am-4pm Wine Tasting - Sponsored by *A&S Land & Cattle*, call Scott to RSVP 503.572.5656 (van will leave Fey Ranch 9:30am sharp, lunch provided by Angelina)
- 5:30pm-8pm Dinner & Social at the Fey Ranch

**Saturday:**

- 9am-10:30am Cattle Viewing
- 10:30am-11:30am Longhorn Clinic
- 11:30am-1pm Lunch (vendor on site)
- **1 pm-3pm PST Cattle Auction**
- Cattle Loading after Conclusion of Sale
- 7pm Dinner at local restaurant, \$30 each please RSVP with Angelina 503.537.8962 by 6/5/17

**Sunday:**

- 7am-Noon Cattle Loading

For boarding contact Daniel 503.349.7866

## **Welcome to the 2017 Fey Longhorns Consignment Sale!**

We are excited about this year's offering of quality cattle. You will find many cows in the 70s club with some grand ladies entering the 80s club soon. Several heifers are exceptional and will definitely leave their mark in someone's herd.

This has been the only registered Longhorn Sale West of the Rocky Mountains since 2011. We are glad that local breeders take advantage to showcase their breeding programs by bringing some of their best. Please take a look at all consignments and convince yourself of the rapid progress made on the West Coast.

**Auctioneer:** John Walton, Dallas OR

**Pedigree Reader:** Justin Rombeck, Frankfort KS

### **Online-Bidding via Hired Hand:**

Bidders must pre-register at [www.HiredHandLive.com](http://www.HiredHandLive.com) by clicking "Fey Ranch Sale". Absentee and auto bids are also accepted. For questions contact Molly Clubb at 319.269.8903

### **Sale day contacts/Phone bidding:**

Daniel 503.349.7866

Angelina 503.537.8962

Molly 319.269.8903

We would like to thank everybody for supporting our 2017 Auction. Bid often and take some great cattle home!

**Your Sale Hosts:** Daniel & Angelina Fey

View updates to sale catalog online prior to sale at  
[www.feylonghorns.com](http://www.feylonghorns.com)

# ELK COVE VINEYARDS

## OREGON WINE PIONEERS

Our family has farmed in Oregon for five generations and we've grown Pinot Noir for over four decades.

Visit us, take in the spectacular view and try estate grown Single Vineyard Wines like our La Bohème Pinot Noir.

*La Bohème Vineyard*

LOOKING FOR A GREAT WINE CLUB?  
*Our Roosevelt Club is one of the best: local events, club exclusives, complimentary tastings & great deals on Elk Cove wines!*



TASTING ROOM OPEN DAILY 10 to 5  
27751 NW Olson Rd, Gaston OR 97119  
1-877-ELK-COVE | [www.elkcove.com](http://www.elkcove.com)



# TAKE YOUR HERD TO THE NEXT LEVEL!

WITH THESE GENETICS YOU CAN'T PASS UP

## PACIFIC COWBOY 40

DOB: 8/12/2014  
COWBOY UP CHEX X  
RC PACIFIC MERMAID  
75.75" TTT AT 29 MONTHS



COWBOY UP CHEX



RC PACIFIC MERMAID



NICK AND SHILO NOYES  
2316 HWY. 30 W - FRUITLAND, IDAHO 83619  
208-739-3962

[WWW.RUNNINGNLONGHORNS.COM](http://WWW.RUNNINGNLONGHORNS.COM)

**SEMEN AVAILABLE!**

\$150/STRAW  
FREE SHIPPING ON  
ALL ORDERS OF 10  
OR MORE STRAWS

# JS Longhorns

Longtime Texas Longhorn breeders since 1989

Lot #43



Ed & Sheryl Johnson

Molalla, OR

503.349.4985

[jslonghorns@yahoo.com](mailto:jslonghorns@yahoo.com)

## LUCAS RANCH



SERVICE SIRE:

**Shadowizm**

DOB: 4/15/1998  
THE SHADOW x ZITHER  
71.5" TTT 5/10/09



Shadowizm heifer calf at side.

**LOT# 16**

**LR Rio Perfection**

DOB: 1/24/14  
SAFARI BL CHEX x RIOBECCA CHEX  
66" TTT on 4/22/17

First cow and heifer  
to both be DNA  
parent verified  
and sold at public  
auction.

**BID WITH  
CONFIDENCE**

MIKE & CATTRINA LUCAS

Bakersfield, CA

661-805-3074 • [www.lucasranch.net](http://www.lucasranch.net)

WWW.CRLONGHORNS.COM

OUR CONSIGNMENTS'  
CALVES WILL  
BE OUTSTANDING!



**RC LONE RANGER**

DOB: 9/20/2014  
COWBOY UP CHEX X  
LR DAYDREAMER  
74.75" TTT on 04/12/2017

**SERVICE SIRE:**

**Lot # 44 Allen's Touch the Wind**  
**Lot# 6 CR Great Dignity**

**CONCEALED WEAPON**

DOB: 11/18/2007  
SHARP SHOOTER 542 X  
HORSESHOE J EXAMPLE  
84" TTT on 10/03/2016

**CALF AT SIDE SIRE:**

**Lot# 45 CR Gold N Tulip Bull**  
**Lot# 5 CR Hooks Cabernet Bull**

*Lot #25 CR Lovely Lark – direct daughter of Concealed Weapon*

**CR**  
LONGHORNS

**ALEXANDRA DEES**

3122 Harper Westfall Rd., Harper OR 97906 | atdees@aol.com | 541-358-8787

WWW.CRLONGHORNS.COM






LOT# 19  
A&S DRAGON GYPSY  
DOB: 3/23/15  
DRAGON WIND X  
17 JASMEN'S GYPSY  
34" TTT ON 11/25/2016

LOT# 20  
A&S BELLE FLOWER  
DOB: 11/25/2015  
FANCY TATTOO X  
DOUBLE RESPECT BELLE

Scott & Amelia Picker  
17205 NE Fairview Drive Dundee, Oregon 97115  
503-572-5656 | [info@aandslandandcattle.com](mailto:info@aandslandandcattle.com) | [www.aandslandandcattle.com](http://www.aandslandandcattle.com)

 Like us on Facebook

**Wine Tasting - Sponsored by *A&S Land & Cattle***  
Call Scott to RSVP 503.572.5656  
Friday the 9th, 9:30am - 4pm

# ***TERMS & CONDITIONS***

**HEALTH:** All sale cattle pass the requirements to sell in this state and most other states. Interstate health papers will be furnished for each animal over six months of age. Each animal requiring TB and Brucellosis test, in accordance with Federal Regulations will have been tested within 30 days of sale date. Such test have been made by a federally accredited laboratory. Purchasers should check with your state veterinarian regarding regulations in your state. Official calf hood vaccination (OCV) is a requirement for all female sale cattle that are older than 10 months.

**CERTIFICATE OF REGISTRY:** Transfer paperwork and registration will be sent by sale hosts to TLBAA or ITLA after payment has cleared.

**BIDDING:** Each animal will be sold to the highest bidder, with reserve. The Auctioneer will settle any disputes as to bids and their decision of such matter shall be final.

**TERMS:** Terms of the sale are cash or check to the Clerk at the conclusion of the auction. No funds will be released until all checks have cleared the bank, approximately 14 business days.

**ANNOUNCEMENTS:** Changes of any information published in the catalog will be announced from the auction box. Such announcements will take precedence. All catalog information or modifications are the responsibility of the Seller.

**GUARANTEE:** All guarantees are between Buyer and Seller. All animals sold are guaranteed as represented by the owner. Females safe in calf, or with calf at side, are considered breeders without further guarantee. All Females vet checked with calf will be announced at sale time.

**POSSESSION:** Immediately after the animal is sold, it will be the sole risk and responsibility of the Buyer. Possession can not be obtained until payment is made. Buyer must make arrangements with Fey Longhorns for care of stock until removed. Any cattle left without arrangement being made will be charged boarding at the Buyer's expense.

**CONTRACT:** The above terms and guarantees shall constitute a contract between Buyer and Seller of each animal sold.



**#1**

**BL CASPER**

**ST. HILAIRE**  
**LONGHORNS**

**DOB:** 02/08/2009

**TLBAA:** # CI261322

JP RIO GRANDE

BL PRETTY GIRL

J.R. GRAND SLAM  
TX W LUCKY LADY

COACH  
BL FINA JOYA

**BREEDING:** COW - BREEDING INFO AVAILABLE PRIOR TO SALE

**COMMENTS:** BEAUTIFUL, BIG BODIED SPECKLED BOB LOOMIS BRED COW. GOOD MAMA, EASY BREEDER WITH 77 1/8" T2T ON 4/9/17. BREEDING INFO AVAILABLE ON [WWW.ST.HILAIRERANCH.COM](http://WWW.ST.HILAIRERANCH.COM) CONSIGNING OUR BEST!



**#2**

**ST CONCEALED  
SURPRISE**

**ST. HILAIRE**  
**LONGHORNS**

**DOB:** 08/26/2011

**TLBAA:** # CAI284943

CONCEALED WEAPON

ST SHADOW'S SURPRISE

SHARPSHOOTER 542  
HORSESHOE J EXAMPLE

CROWN'S CLASSIC SHADOW  
WINTER BREEZE

**BREEDING:** COW - BREEDING INFO AVAILABLE PRIOR TO SALE

**COMMENTS:** FLAT, ROLLED BACK, HARD TWIST WITH 72.25" T2T ON 4/9/17. ONE OF OUR BEST FROM OUR FAMILY OF COWS: EASY BREEDER, EXCELLENT MAMA, AND BREEDING INFO AVAILABLE ON [WWW.STHILAIRERANCH.COM](http://WWW.STHILAIRERANCH.COM). CONSIGNING OUR BEST!



**#3**

**ZD ROCKS  
TWISTED  
SISTER**

**FEY  
LONGHORNS**

**DOB:** 01/31/2008

ROCK STAR

PHENOMENON  
STARLIGHT

**TLBAA:** # C251653

ZD DELTA TWISTED SISTER

HABANERO  
CP MEASLES FLOWER

**BREEDING:** PAIR - HEIFER CALF BY WS AMAZON, DOB 2/21/17  
NOT EXPOSED AFTER CALVING

**COMMENTS:** BEAUTIFUL RED ROAN STARLIGHT GRANDDAUGHTER  
WITH OVER 72" T2T. RETAINING HER 2016 HEIFER BY CASINO'S  
BOLERO AS A REPLACEMENT. SELLS WITH A LOVELY WS AMAZON  
HEIFER AT SIDE - MORE INFO ON [WWW.FEYLONGHORNS.COM](http://WWW.FEYLONGHORNS.COM).



**#4**

**CR  
OVERMARKED**

**FEY  
LONGHORNS**

**DOB:** 06/11/2010

OVER KILL

OVERHEAD  
FIELD OF PEARLS

**TLBAA:** # CI274581

ATTAIN THE MARK

MILE MARKER  
UNATTAINABLE

**BREEDING:** PAIR— HEIFER CALF BY WS AMAZON, DOB 3/18/17

**COMMENTS:** LOOK AT THIS PAIR—A STUNNING OVERKILL DAUGHTER  
IN HER PRIME WITH PEDIGREE, COLOR, BODY AND ROLLING HORNS,  
SELLS WITH A NICE WS AMAZON HEIFER CALF AT SIDE. SHE IS A  
WONDERFUL PRODUCER: RETAINING HER 2015 AND 2016 HEIFER AS  
REPLACEMENTS. MORE INFO ON [WWW.FEYLONGHORNS.COM](http://WWW.FEYLONGHORNS.COM)



**#5**

**CR HOOKS  
CABERNET**

**CR  
LONGHORNS**

**DOB:** 03/15/2013

CAPTAIN HOOK

JP RIO GRANDE  
HUBBELL'S MISS ANNIE

**TLBAA:** # CI284431

TEJANO CABERNET

MILE MARKER  
UNATTAINABLE

**BREEDING:** PAIR - BULL CALF BY CONCEALED WEAPON, DOB 4/2/17

**COMMENTS:** LOVELY GENTLE COW WITH GREAT COLOR! HAS A SUPER BRINDLE AND WHITE CONCEALED WEAPON BULL CALF AT SIDE. MORE INFO AT [CRLONGHORNS.COM](http://CRLONGHORNS.COM).



**#6**

**CR GREAT  
DIGNITY**

**CR  
LONGHORNS**

**DOB:** 03/06/2014

ARCHER TEXA

WS JAMAKIZM  
DELTA VAN HORNE

**TLBAA:** # CI291377

WINNING DIGNITY

WINCHESTER  
POMPOUS

**BREEDING:** COW - EXPOSED TO RC LONE RANGER FROM 4/20- 6/7/17

**COMMENTS:** BIG SPLASHY ARCHER TEXA DAUGHTER OUT OF A WINCHESTER DAUGHTER WE LOVE. EXPOSED BEFORE THE SALE TO OUR SUPER YOUNG BULL RC LONE RANGER FOR A SHOT OF 90" GENETICS. UPDATES AT [WWW.CRLONGHORNS.COM](http://WWW.CRLONGHORNS.COM).



**#7**

**SEBASTIAN'S  
FANCY CB**

**CABALLO BRAVO  
LONGHORNS**

**DOB:** 09/25/2013

SEBASTIAN

BOOMERANG CP  
TABASCO'S LEZAWÉ

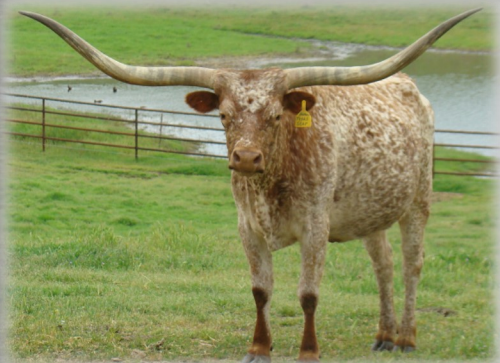
**TLBAA:** # CTI288545

LTL FOXY FANTASY

DEIGO'S HOT SHOT  
JEAN 223

**BREEDING:** COW - BRED TO RIO TABASCO EOT

**COMMENTS:** FANTASY IS A GOOD LOOKING, BIG BODIED COW WITH A LOT OF TOTAL HORN. SHE IS A MILD MANNERED LADY THAT IS EASY TO WORK. SHE IS BRED TO RIO TABASCO EOT THAT SHOULD RESULT IN A REALLY NICE CALF.



**#8**

**SHAMROCK  
TEXAS STAR**

**CABALLO BRAVO  
LONGHORNS**

**DOB:** 06/29/2007

TEJAS STAR

STARLINER  
DELTA VAN HORNE

**TLBAA:** # CI250606

TEXANA TARBABY

STARLINER  
UNARMED

**BREEDING:** COW- EXPOSED TO RIO TABASCO EOT FROM 8/16 - 11/26/16

**COMMENTS:** BEAUTIFUL TEJAS STAR DAUGHTER WITH 78" T2T HORN. SHE IS VERY EASY TO WORK AND A PLEASURE TO BE AROUND. SHE RAISES NICE CALVES WITH LOTS OF COLOR. DOUBLE BRED STARLINER. HERE IS A FRONT PASTURE COW THAT WILL DO A GREAT JOB FOR YOU!



**#9**

**ECR CACTUS  
COLADA**

**ROD & KELLY  
OLSEN**

**DOB:** 02/22/2002

DON JULIO

PHENOMENON  
DELTA DIAMOND

**ITLA:** # 267204

DELTA CAROL

EMPEROR  
ACE'S TOAST

**BREEDING:** COW - BRED TO RIO ROANITAS COWBOY.

**COMMENTS:** COLADA HAS A STACKED PEDIGREE, A GREAT DISPOSITION AND A GOOD CONFORMATION WITH 71.25" T2T HORNS. ALL OF HER CALVES SINCE WE BOUGHT HER HAVE BEEN EITHER RED LINEBACKS OR CARRY HER PAINT COLOR.



**#10**

**ECR JULIO'S  
CINNAMON**

**ROD &  
KELLY OLSEN**

**DOB:** 04/02/2006

DON JULIO

PHENOMENON  
DELTA DIAMOND

**TLBAA:** # C246324

SUPER CINNAMON 567

MEASLES' SUPER RANGER  
CINNAMON GIRL

**BREEDING:** PAIR - BULL CALF BY RIO ROANITAS COWBOY, DOB 3/20/17, EXPOSED BACK TO SAME SIRE FROM 5/1 TO SALE DATE

**COMMENTS:** GREAT COW WITH STACKED PEDIGREE. SHE HAS A BEAUTIFUL TWIST IN HER HORNS (69.375" T2T) AND THROWS A LOT OF COLOR ON HER CALVES.



**#11**

**ROCK CHIP**

**WANNABA**  
**RANCH**

**DOB:** 03/25/2013

PCC RIM ROCK

JP RIO GRANDE  
PCC HORIZON

**TLBAA:** # CI290757

RR RANCH CHICK

RM HEAVY TOUCH  
NIGHT CRITTER BCB

**BREEDING:** COW - BRED TO WBAR LITTLE MR. CHEX

**COMMENTS:** TERRIFIC PCC RIM ROCK (84" T2T) DAUGHTER I ACQUIRED YEARS AGO FROM PACE CATTLE CO. SUPERB PEDIGREE WITH RIO GRANDE ON TOP AND TOUCHDOWN OF RM ON THE BOTTOM. SHOULD BE HEAVY BRED TO A BRINDLE SON OF WBARITSMISTERCHEX2U WITH 80" T2T. ROCK CHIP MEASURED 60" T2T ON 01/20/17.



**#12**

**SURPRISE  
PEARL**

**WANNABA**  
**RANCH**

**DOB:** 11/27/2014

PEARL JAM

PCC SILVER BULLET  
RR RANCH CHICK

**TLBAA:** # CI293109

BIRTHDAY SURPRISE

WHELMING SHOW TIME  
FA BIRTHDAY GIRL

**BREEDING:** PAIR— HEIFER CALF BY HUBBELL'S LOADED WEAPON, DOB 4/5/17

**COMMENTS:** REALLY NICE RED AND WHITE PAINT HEIFER. GOES BACK TO COWBOY CHEX ON THE TOP AND WHELMING KING ON THE BOTTOM. HEIFER CALF AT SIDE BY HUBBELL'S LOADED WEAPON, A BLACK AND WHITE CONCEALED WEAPON SON. MEASURED 47.75" ON 12/31/16, SHOULD BE WELL OVER 50" T2T ON SALE DAY. NOT EXPOSED AFTER CALVING.





**#13**

**NIGHT  
FEATHERS**

**EASTON  
JANE**

**DOB:** 06/11/2011

SS BUMP IN THE NIGHT

FARLAP CHEX  
DIXIE RHYTHM

**TLBAA:** # CI279860

LITTLE FEATHERS

RHF PHENOMENAL HUNTER  
RHF TAR' N FEATHERS

**BREEDING:** COW - EXPOSED TO ATLAS 91/2 FROM 04/08/17 TO SALE DATE

**COMMENTS:** FARLAP GRANDDAUGHTER THAT HAS A COMMANDING PRESENCE WITH HER TALL, DARK STATURE. SHE MEASURED 66.75" T2T ON 04/07/17 AND SELLS EXPOSED TO ATLAS 91/2, A COLORFUL DRAG IRON SON THAT HAS PRODUCED SOME OUTSTANDING OFFSPRING.



**#14**

**EJ'S DIXIE  
HUNTER**

**EASTON  
JANE**

**DOB:** 12/12/2012

RC GREY BACK

JP RIO GRANDE  
RC ROCKSTARS DEBUT

**TLBAA:** # CI292558

SS EMPEROR'S PRINCESS

EMPEROR  
LITTLE FEATHERS

**BREEDING:** COW - HEIFER CALF BY EJ'S LEONIDAS, DOB 1/12/17, EXPOSED TO ATLAS 91/2 FROM 04/08/17 TO SALE

**COMMENTS:** DIXIE IS A GRANDDAUGHTER TO BOTH JP RIO GRANDE AND EMPEROR. SHE IS A GREAT PRODUCER AND A LOVING MOTHER WITH A GENTLE DISPOSITION AND A LOVE FOR APPLES. SHE MEASURED 62.75" T2T ON 4/07/17. HEIFER CALF IS BY A TEJAS STAR SON.



**#15**

**BAUBLE  
BEADS AND  
STARS**

**JUDY WILSON**

**DOB:** 02/20/2014

X STAR

STAR REGARD 927  
AMERICAN SONATA

**TLBAA:** # CI292047

MAGENTA RIBBON OF STARS

STAR MAKER  
SARASAM'S REFLECTED STAR

**BREEDING:** COW - EXPOSED TO CLEVE'S RORSCHACH FROM 6/1/2016 TO PRESENT

**COMMENTS:** BIG BODIED, GENTLE COW WITH A LOT OF HORN GROWTH YET TO COME. FOR SALE ONLY BECAUSE WE ARE KEEPING HER BULL CALF AS A FUTURE HERD SIRE. EXPOSED TO A GRULLA COLORED VICTORY LAP SON. MEASURED 49" T2T AT 24 MONTHS WITH 60" TH AND 10" BASE. UPDATED MEASUREMENTS ON SALE DAY.



**#16**

**LR RIO  
PERFECTION**

**LUCAS RANCH**

**DOB:** 01/14/2014

SAFARI BL CHEX

FARLAP CHEX  
NIGHT SAFARI BL 833

**TLBAA:** # CI294301

RIOBECCA CHEX

RIO SAFARI CHEX  
C+D'S RIOS REBECCA

**BREEDING:** PAIR - HEIFER CALF BY SHADOWIZM, DOB 12/24/16

**COMMENTS:** PERFECTION IS AN OUTSTANDING YOUNG FEMALE WITH A GOOD BODY AND SHE IS A GREAT MAMA. TO COMPLETE THE PERFECT PACKAGE SHE IS EXTREMELY GENTLE AND FRIENDLY AND COMES WITH A HEIFER CALF BY SHADOWIZM AT SIDE. WE WANTED TO BRING A GOOD ONE AND HERE SHE IS. MORE INFO ON [WWW.LUCASRANCH.NET](http://WWW.LUCASRANCH.NET).



**#17**

**COLONEL  
MISSOURA**

**FEY  
LONGHORNS**

**DOB:** 04/28/2013

**TLBAA:** # SI65215

**BREEDING:** STEER

**COMMENTS:** BEAUTIFUL YOUNG TROPHY STEER WITH STRIKING COLOR, GOOD HORN AND A GENTLE DISPOSITION. HERE IS A FRONT PASTURE ANIMAL THAT WILL MAKE HEADS TURN. WORKS AS A GREAT MARKER STEER FOR AI PROGRAMS. WE PURCHASED THE CALF FROM OUR GOOD FRIEND COL. BILL - THE LATE BILL LE'AN.

K.C. CONTENDER

K.C. JUBILEE

HUNTS DEMANDS R.  
K.C. COALETTE

HUNTS DEMANDS R.  
K.C. JOSETTE



**#18**

**BEERE'S  
MOONDANCER**

**FEY  
LONGHORNS**

**DOB:** 03/15/2009

**TLBAA:** # CI264710

**BREEDING:** PAIR - BULL CALF BY ATLAS 91/2, DOB 2/12/17, NOT EXPOSED AFTER CALVING

**COMMENTS:** SOLID PCC EVADER GRANDDAUGHTER WITH HEAVY HORN AND ALWAYS RAISING A BIG CALF. HER 2015 HEIFER MEASURED 54" T2T AT 24 MONTHS! HERE IS A COW THAT TRULY OUTPRODUCES HERSELF YEAR AFTER YEAR—MORE INFO ON [WWW.FEYLONGHORNS.COM](http://WWW.FEYLONGHORNS.COM) .

PCC EVADE 22

711-SHADOW DANCER

PCC EVADER  
PCC CATCH 22

711-SUNDANCE  
711-DARK SHADOW



**#19**

**A&S DRAGON  
GYPSY**

**A&S LAND AND  
CATTLE**

**DOB:** 03/23/2015

DRAGON WIND

DRAG IRON  
WINNING FACE

**TLBAA:** #CI295054

17 JASMEN'S GYPSY

FL GAUCHO  
17 JASMEN

**BREEDING:** HEIFER - EXPOSED TO CR MARS FROM 4/15 - 6/9/17

**COMMENTS:** GREAT ALL AROUND HEIFER. SHE IS BIG BODIED AND COLORFUL WITH A WONDERFUL DISPOSITION. DRAG IRON GRANDDAUGHTER, EXPOSED TO A FANCY BRINDLE ARCHER TEXA SON OUT OF A 78" T2T COW. MORE INFO AT [WWW.AANDSLANDANDCATTLE.COM](http://WWW.AANDSLANDANDCATTLE.COM).



**#20**

**A&S BELLE  
FLOWER**

**A&S LAND AND  
CATTLE**

**DOB:** 11/25/2015

FANCY TATTOO

DW MR. FANCY PANTS  
BREWS FANCY FANDANGO

**TLBAA:** #CI296488

DOUBLE RESPECT BELLE

SHADOWS COMMAND RESPECT  
MT WIDESPREAD'S RESPECT

**BREEDING:** HEIFER - NOT EXPOSED

**COMMENTS:** THIS THANKSGIVING BABY HAS CAUGHT UP AND PASSED MOST OF THE OTHER HEIFERS THAT WERE BORN UP TO 5 MONTHS PRIOR. GREAT BODY CONDITION AND A SOLID SET OF HORNS. LOOKING FORWARD TO SEEING THIS GIRL MATURE. MORE INFO ON [WWW.AANDSLANDANDCATTLE.COM](http://WWW.AANDSLANDANDCATTLE.COM).



**#21**

**SRL GINGER**

**SR**  
**LONGHORNS**

**DOB:** 03/11/2016

SR DRAGSTER

DRAG IRON  
PCC HELLO KITTY

**TLBAA:** # CI297856

CT'S PAPRIKA

COACH TOMMIE  
ECR CACTUS COLADA

**BREEDING:** HEIFER—NOT EXPOSED

**COMMENTS:** BEAUTIFUL GRANDDAUGHTER OF DRAG IRON AND COACH TOMMIE. HALTER BROKE AND READY FOR SHOW RING, VERY GENTLE AND FRIENDLY. SHE MEASURED 32" T2T AT 12 MONTHS AND 10 DAYS!!! MORE INFO ON [WWW.SRLONGHORNS.COM](http://WWW.SRLONGHORNS.COM)



**#22**

**WB**  
**PHENOMENOL**  
**SAGEJUMPER**

**WB**  
**LONGHORNS**

**DOB:** 03/11/2016

BOLERO'S LUCKY MARK

CASINO'S BOLERO  
CR OVERMARKED

**TLBAA:** # CI301702

SMOKY WITCH

CROWN'S SMOKE JUMPER  
VV SAGE WITCH

**BREEDING:** HEIFER - NOT EXPOSED

**COMMENTS:** HER MATERNAL HALF SISTER WAS 52" T2T AT 24 MONTHS AND SHE MEASURED 32.5" T2T AT EXACTLY 12 MONTHS OLD! WE ARE RETAINING HER MOTHER AND HER SISTER. SHE IS A HARD ONE TO LET GO BUT WE CAN'T KEEP THEM ALL. MORE INFO ON [WWW.WBLONGHORNS.COM](http://WWW.WBLONGHORNS.COM) .



**#23**

**ATLAS' TINY  
BUBBLES**

**WB  
LONGHORNS**

**DOB:** 09/14/2015

ATLAS 91/2

DRAG IRON  
SHAZAMM

**TLBAA:** # CI296967

CASINO'S BACCARAT

FEY'S RIO CASINO  
BW BOOMING APRIL

**BREEDING:** HEIFER - EXPOSED TO CR RED HOT TEXAN FROM 5/1 TO SALE DATE.

**COMMENTS:** GORGEOUS ATLAS 91/2 DAUGHTER OUT OF A RIO CASINO DAUGHTER, MEASURING 41.25" T2T AT 18 MONTHS. EXPOSED TO AN ARCHER TEXA SON THAT MEASURED 68" T2T AT 30 MONTHS. MORE INFO ON [WWW.WBLONGHORNS.COM](http://WWW.WBLONGHORNS.COM) .



**#24**

**JUMA GIFT**

**CR  
LONGHORNS**

**DOB:** 04/08/2015

JUMA

DRAG IRON  
JUJU

**TLBAA:** # CI296363

PRINCESS CARLYN

DRAG IRON  
UNCHECKED

**BREEDING:** HEIFER - EXPOSED TO DOUBLE TUFF CHEX 10/27 TO 12/05/16.

**COMMENTS:** BIG BODIED BRINDLE JUMA DAUGHTER WHO IS CONFIRMED BRED TO DOUBLE TUFF CHEX FOR A FALL 2017 CALF. HER PEDIGREE HAS TWO SHOTS OF JAMAKIZM AND HER CALF WILL HAVE 80'S, 90 AND 100" T2T ANCESTORS IN ITS PEDIGREE! MORE INFO ON [WWW.CRLONGHORNS.COM](http://WWW.CRLONGHORNS.COM).



**#25**

**CR LOVELY  
LARK**

**CR  
LONGHORNS**

**DOB:** 03/31/2016

CONCEALED WEAPON

SHARP SHOOTER 542  
HORSESHOE J EXAMPLE

**TLBAA:** # CI302638

CR DESERT LARK

HIGH PLAINS DRIFTER  
BW DESERT ROSE

**BREEDING:** HEIFER - NOT EXPOSED

**COMMENTS:** BIG, BEAUTIFUL CONCEALED WEAPON DAUGHTER! SHE WAS OVER 32" T2T AT 12 MONTHS AND IS ALREADY SHOWING THAT WONDERFUL CONCEALED WEAPON TWIST IN HER HORNS.

UPDATES AT [WWW.CRLONGHORNS.COM](http://WWW.CRLONGHORNS.COM) .



**#26**

**OUTBACK  
DONNA EOT**

**ROCKING F  
RANCHES**

**DOB:** 04/06/2004

BOOMERANG CP

OVERLORD CP  
INDIAN GIRL 636

**TLBAA:** #C224979

R.L. SLATER

BUTLER RAMBLER  
DONNA CRANE 9/9

**BREEDING:** COW - AI'D TO WS JAMAKIZM, CONFIRMED BRED

**COMMENTS:** BIG, BEAUTIFUL BOOMERANG DAUGHTER WITH TWISTY HORNS. SHE IS AI'D TO WS JAMAKIZM AND CONFIRMED BRED FOR A FALL 2017 CALF. YOU CAN'T GO WRONG WITH THESE GENETICS!



**#27**

**RIO  
ROSEANN CB**

**CABALLO  
BRAVO  
LONGHORNS**

**DOB:** 04/19/2015

JP RIO GRANDE

JR GRAND SLAM  
TX W LUCKY LADY

**TLBAA:** # CAI299320

FANNIE'S SUNNY 271

FEISTY LEE JR.  
PHENOMENAL LIVELY DEIGO

**BREEDING:** HEIFER - NOT EXPOSED.

**COMMENTS:** ROSEANN IS A VERY CORRECT, GREAT LOOKING RIO GRANDE DAUGHTER. SHE HAS A LOT OF T2T WITH HER DAM (A FEISTY LEE JR. DAUGHTER) MEASURING 81". SHE HAS STARTED TO BRINDLE UP IN THE LAST FEW MONTHS. PLEASE TAKE A HARD LOOK. SHE IS GOING TO MAKE AN OUTSTANDING COW!



**#28**

**COMMANDER'S  
ROSLAND 544**

**CABALLO BRAVO  
LONGHORNS**

**DOB:** 06/14/2015

COMMANDER EOT

SITTIN BULL  
HL SWEET PEPPER

**TLBAA:** # CI299543

EOT OUTBACK ROSLAND

BOOMERANG CP  
EOT SARAH'S QUEEN

**BREEDING:** HEIFER - NOT EXPOSED.

**COMMENTS:** GREAT LOOKING HEIFER WITH LOTS OF HORN. Sired by BOWMAN'S COMMANDER EOT. SITTIN BULL ON TOP AND BOOMERANG ON THE BOTTOM MAKES FOR A WELL BRED HEIFER. SHE HAS STARTED TO ROAN WITH RED SPOTS AND WILL MAKE SOMEONE A GREAT COW.





**#29**

**RENEGADE'S  
CATCHIT 404**

**PANTHER  
CREEK RANCH**

**DOB:** 05/01/2014

RENEGADE 19/5

J.R. GRAND SLAM  
R3 DEJA VU

**TLBAA:** # CI290899

EOT OUTBACK CATCHIT

BOOMERANG CP  
BL CATCHIT

**BREEDING:** HEIFER - EXPOSED TO SE UNOSTOPABULL FROM 7/7 TO 11/2/16  
AND TO TUFF SPIRIT FORM 11/25/16 TO 6/1/17

**COMMENTS:** PACKED PEDIGREE WITH GRAND SLAM, GUNMAN, BOOMERANG,  
BL CATCHIT AND FARLAP CHEX. PLUS EXPOSED TO SE UNOSTOPABULL, SIRE  
OF THE \$115,000 UTOPIA THAT SOLD AT THE 2015 VEGAS SALE. DEFINITELY  
A GOLD MINE OF GENETICS!



**#30**

**SR 007's  
CITROEN 577**

**STRUTHOFF  
RANCH**

**DOB:** 11/28/2015

HUBBELLS RIO 007

JP RIO GRANDE  
G+ L WORKING WOMAN

**TLBAA:** # CI302720

SR MADDEN'S CANELA

SR MADDEN 552  
CINNAMON STARS

**BREEDING:** HEIFER - NOT EXPOSED

**COMMENTS:** CITROEN 577 WILL BE APPROXIMATELY 18.5 MONTHS OLD BY  
SALE DATE AND READY FOR YOUR BULL. HER SIRE RIO 007 (84.5" T2T) HAS  
BEEN CONSISTENTLY TRANSFERRING HIS LARGE FRAME AND HORN GROWTH  
TO HIS PROGENY. SHE HAS GOOD CONFORMATION AND A NICE HORN SET.  
VIEW [WWW.STRUTHOFF-RANCH.COM](http://WWW.STRUTHOFF-RANCH.COM).



**#31**

**THIRD  
ALARM FIRE**

**FEY  
LONGHORNS**

**DOB:** 03/11/2011

ECR CROSSFIRE 216

APPARENT HEIR  
SUGAR QUEEN

**TLBAA:** # CI266724

CRASH ALARM

SHADOWIZM  
SMOKE ALARM

**BREEDING:** PAIR - BULL CALF BY ATLAS 91/2, DOB 3/21/17, NOT EXPOSED AFTER CALVING

**COMMENTS:** GORGEOUS COW WITH TWISTY HORN LIKE HER DAM CRASH ALAM. THIS 2011 MODEL HAS COLOR, CONFORMATION, DISPOSITION AND A STRONG PEDIGREE. HER LAST MEASUREMENT WAS IN THE HIGH 60S - CURRENT T2T ON SALE DAY.



**#32**

**SHESA COW  
GIRL**

**FEY  
LONGHORNS**

**DOB:** 04/19/2012

PCC CAPTAIN CRUNCH

HUBBELLS CAPTAIN HOOK  
HORSESHOE J FASCINATE

**TLBAA:** CI279702

RESPECTED POLKADOT

HUNTS DEMANDS RESPECT 2  
7-11 POKADOT

**BREEDING:** COW- EXPOSED TO ATLAS 91/2 FROM 8/15 TO 11/30/16

**COMMENTS:** YOUNG BRINDLE COW WITH A HUGE HORN SET, CLOSING IN ON 70" T2T. WE ARE RETAINING HER 2016 HEIFER. SHE SELLS BRED TO OUR DRAG IRON SON ATLAS 91/2. UPDATED MEASUREMENT ON SALE DAY- MORE INFO ON [WWW.FEYLONGHORNS.COM](http://WWW.FEYLONGHORNS.COM).



**#33**

**DAKOTA  
MAX**

**BISHOP SCOTT  
RANCH**

**DOB:** 05/05/2014

DOUBLE DOWN DAKOTA

FEY'S RIO CASINO  
JH DAKOTA

**TLBAA:** # CI303084

FEY'S SANGRIA MAX

RODEO MAX ST  
SAND DOLLAR

**BREEDING:** HEIFER - EXPOSED TO ATLAS 91/2 FROM 4/8/17 TO SALE DATE

**COMMENTS:** BEAUTIFUL YOUNG HEIFER WITH GOOD CONFORMATION AND EXCELLENT HORN GROWTH. SHE IS A GRANDDAUGHTER TO MULTIPLE HORN SHOWCASE WINNER RODEO MAX ST AND TO FEY'S RIO CASINO. SHE SELLS EXPOSED TO ATLAS 91/2, A COLORFUL SON OF DRAG IRON AND PROVEN PRODUCER.



**#34**

**MAY DOUBLE  
DOWN**

**BISHOP  
SCOTT  
RANCH**

**DOB:** 05/03/2015

DOUBLE DOWN DAKOTA

FEY'S RIO CASINO  
JH DAKOTA

**TLBAA:** # CI303085

FEY'S SANGRIA MAX

RODEO MAX ST  
SAND DOLLAR

**BREEDING:** HEIFER - EXPOSED TO ATLAS 91/2 FROM 4/8/17 TO SALE DAY

**COMMENTS:** COLORFUL, LOVELY WELL BRED HEIFER. DAUGHTER OF FEY'S SANGRIA MAX WHO IS A GENTLE, STEADY PRODUCER. MAY DOUBLE DOWN IS A GRANDDAUGHTER TO MULTIPLE HORN SHOWCASE WINNER RODEO MAX ST AND TO FEY'S RIO CASINO. SELLS EXPOSED TO ATLAS 91/2.



**#35**

**KC MARVELOUS  
MOMENT**

**WANNABA  
RANCH**

**DOB:** 08/03/2012

HUNTS TIMELESS MOMENT

HUNTS COMMAND RESPECT  
SILVER CHOICE

**TLBAA:** CI283621

J.R. MARVA

J.R. VIKING  
J.R. MILKY WAY

**BREEDING:** PAIR - BULL CALF BY HUBBELL'S LOADED WEAPON, DOB 3/20/17, NOT EXPOSED AFTER CALVING

**COMMENTS:** BEAUTIFUL MOSTLY WHITE COW WITH RED EARS AND RED SPECKS. GOES BACK TO HUNTS COMMAND RESPECT ON TOP AND J.R. PREMIUM TWICE ON BOTTOM. BULL CALF AT SIDE BY BLACK AND WHITE CONCEALED WEAPON SON. 62.75" T2T ON 1/25/2017.



**#36**

**HOT SEQUELA  
PC 414**

**WANNABA  
RANCH**

**DOB:** 07/09/2011

HOT PLAYBOY

HOT SPOTS 7  
JP GRAND ANNE

**TLBAA:** CI276865

AWESOME SEQUELA

AWESOME ALAMO  
SEQUELA

**BREEDING:** PAIR - BULL CALF BY HUBBELL'S LOADED WEAPON, DOB 03/29/17, NOT EXPOSED AFTER CALVING

**COMMENTS:** REALLY NICE HOT PLAYBOY DAUGHTER. I'M KEEPING HER 2015 HEIFER FOR REPLACEMENT. HER DAM IS A VERY NICE AWESOME ALAMO DAUGHTER. SELLS WITH BULL CALF AT SIDE BY BLACK AND WHITE CONCEALED WEAPON SON. 64.675" T2T ON 1/20/17.



**#37**

**HUBBELL'S  
RIO  
ROANITA**

**ROD & KELLY  
OLSEN**

**DOB:** 04/27/2010

JP RIO GRANDE

J.R. GRAND SLAM  
TX W LUCKY LADY

**ITLA:** # 267776

BL ROANITA

WATSON 83  
DELTA ROANITA

**BREEDING:** PAIR - BULL CALF BY RIO ROANITAS COWBOY, DOB 3/26/17

**COMMENTS:** JP RIO GRANDE DAUGHTER FROM MARK HUBBELL'S BREEDING PROGRAM. WE RETAINED HER 2014 SON FOR OUR HERD SIRE. 2016 CALF SHOWS A LOT OF BACKWARD HORN GROWTH AND GOOD MASS.



**#38**

**GLORIA  
MAX**

**ROD & KELLY  
OLSEN**

**DOB:** 03/26/2010

RODEO MAX ST

MAXIMUS ST  
RODEO REDHEAD ST

**TLBAA:** # CI270319

SE COOP'S BUNYAN

PAUL BUNYAN  
COOPERS 94

**BREEDING:** COW - BRED TO RIO ROANITAS COWBOY

**COMMENTS:** RODEO MAX ST DAUGHTER WITH AWESOME COLOR AND HEAVY, TWISTY HORN. BRED TO RIO ROANITAS COWBOY WHO IS A COWBOY CATCHIT CHEX SON.



**#39**

**JELLY BEAN  
405**

**RIDGE POINT  
LONGHORNS**

**DOB:** 07/02/2014

OSCEOLA

SITTIN BULL  
REDMAN'S LEGACY

**TLBAA:** # CI293353

J5 SHELLS PISTOL PEARL

J5 PISTOL PETE  
J5 SEA SHELL

**BREEDING:** PAIR - BULL CALF BY LOCO DINGER, DOB 3/5/17, EXPOSED TO RUDE MOOD FROM 4/7/17 TO SALE DATE

**COMMENTS:** REALLY NICE OSCEOLA DAUGHTER WTH BULL CALF AT SIDE. SHE IS EXPOSED TO RUDE MOOD (41" T2T AT 12 MONTHS) FOR THAT FAMOUS SITTIN BULL X LADY MONIKA BL CROSS. UPDATED MEASUREMENT ON SALE DAY.



**#40**

**EJ'S RIO  
GRAND  
PRINCESS**

**EASTON  
JANE**

**DOB:** 10/15/2013

RC GREY BACK

JP RIO GRANDE  
RC ROCKSTARS DEBUT

**TLBAA:** # CI292562

MISS MONA

SUNHAVEN SUE'S VISION  
SS FARLAP DOLLY

**BREEDING:** COW - EXPOSED TO ATLAS 91/2 FROM 4/8/17 TO SALE DATE

**COMMENTS:** RIO IS A 3-YEAR OLD WITH BEAUTIFUL TRI-COLORED BODY AND 63.675" T2T ON 4/7/17. SHE HAS DONE A GREAT JOB WITH HER FIRST CALF. SELLS EXPOSED TO ATLAS 91/2, A COLORFUL, HEAVY HORNED DRAG IRON SON THAT IS A PROVEN PRODUCER.



**#41**

**ATLAS' ACE**

**FEY**  
**LONGHORNS**

**DOB:** 04/04/2015

ATLAS 91/2

DRAG IRON  
SHAZAMM

**TLBAA:** # CI296749

CASINO'S WILD CARD

FEY'S RIO CASINO  
BW DEMANDING WOMAN

**BREEDING:** HEIFER - EXPOSED TO TUFF AND GRANDE FROM 3/14 -5/30/17

**COMMENTS:** ELITE TOTAL PACKAGE HEIFER WITH 57" T2T AT 24 MONTHS!! SHE HAS HORN, A PRETTY HIDE, GOOD CONFORMATION AND DISPOSITION BACKED UP BY A STRONG PEDIGREE. HER DAM IS A FULL SISTER TO THE \$31,000 CASINO'S ACE. SELLS EXPOSED TO OUR COWBOY TUFF SON THAT MEASURED 65" AT 24 MONTHS. MORE INFO ON [WWW.FEYLONGHORNS.COM](http://WWW.FEYLONGHORNS.COM).



**#42**

**BOLERO'S  
NORTHCUTT**

**FEY**  
**LONGHORNS**

**DOB:** 03/17/2015

CASINO'S BOLERO

FEY'S RIO CASINO  
TCR HOT ZHI BLUES

**TLBAA:** # CI296754

VV SAGE WITCH

SAGE SMOKE  
WITCH BAR

**BREEDING:** HEIFER - EXPOSED TO ATLAS 91/2 FROM 8/20 TO 12/31/16

**COMMENTS:** WE LOVE TO CROSS JP RIO GRANDE OVER HUNTS COMMAND RESPECT. THIS LADY IS ANOTHER PROOF THAT IT WORKS. NORTHCUTT HAS DEEP RED COLOR WITH FLAT ROLLING HORNS. HEAVY BRED TO OUR DRAG IRON SON ATLAS 91/2. WE ARE RETAINING A FULL SISTER.



**#43**

**J5 RIGHTEOUS  
BEAUTY**

**J5  
LONGHORNS**

**DOB:** 01/23/2009

CROWN'S EVENING BREEZE

CROWN ROYAL 007  
SK SUMMER BREEZE

**TLBAA:** # C261069

J5 CROWN'S BEAUTY

SL DON JOSE  
CROWN C MS 44/5

**BREEDING:** COW - SAFE IN CALF TO ROTOTILLER

**COMMENTS:** BEAUTIFUL COW WITH EXCELLENT CONFORMATION AND EXCEPTIONAL HORNS. PRODUCTIVE MAMA AND CONSISTENT PRODUCER. SHE WILL STANDOUT IN YOUR PASTURE! 3 OF HER 7 OFFSPRING ARE IN OUR HERD. SHOULD CALVE BEFORE SALE AND EXPOSED BACK TO ROTOTILLER, A CASINO'S BOLERO SON.



**#44**

**ALLENS  
TOUCH THE  
WIND**

**CR  
LONGHORNS**

**DOB:** 03/16/2013

RM HEAVY TOUCH

TOUCHDOWN OF RM  
GF BROWN 4

**TLBAA:** # CI300117

ALLEN'S DOHERTY 9/06 CF11

DOUBLE TEX  
RANGER'S MONIES

**BREEDING:** COW - EXPOSED TO RC LONE RANGER FROM 4/20 TO 6/7/17

**COMMENTS:** BRINDLE SPOTTED COW OUT OF A CLONE OF THE FAMOUS DOHERTY 6 COW. SUPER PEDIGREE FROM THE HEART OF THE ALLEN RANCH. EXPOSED BEFORE THE SALE TO OUR SUPERB YOUNG BULL RC LONE RANGER FOR A SHOT OF 90" GENETICS. UPDATES AT [WWW.CRLONGHORNS.COM](http://WWW.CRLONGHORNS.COM) .





**#45**

**CR GOLD N  
TULIP**

**CR  
LONGHORNS**

**DOB:** 12/01/2012

**GOLD N RULE**

HUNTS COMMAND RESPECT  
SAW DUST

**TLBAA:** # CI282549

**JP GRAND TULIP**

J.R. GRAND SLAM  
BLOSSOM'S TULIP

**BREEDING:** PAIR— BULL CALF BY CONCEALED WEAPON, DOB 3/9/17

**COMMENTS:** A RARE OPPORTUNITY FOR 90" GENETICS. GOLD N TULIP IS OUT OF OUR GREAT JP GRAND TULIP WHO IS OVER 90" T2T AT 8 YEARS OLD. CONCEALED WEAPON ADDS ANOTHER 90" COW AS THE SIRE OF THE BULL CALF AT HER SIDE. A POWERFUL PACKAGE FOR THE SERIOUS BREEDER! UPDATES AT [WWW.CRLONGHORNS.COM](http://WWW.CRLONGHORNS.COM).



**#46**

**SEMEN LOT:  
PACIFIC  
COWBOY 40**

**RUNNING N  
LONGHORNS**

**DOB:** 08/12/2014

**COWBOY UP CHEX**

COWBOY CHEX  
BL RIO CATCHIT

**TLBAA:** # BTI89456

**RC PACIFIC MERMAID**

TEJAS STAR  
CRANBERRY WINE

**COMMENTS:** 10 STRAW LOTS—A REALLY GREAT BULL BY COWBOY UP CHEX AND RC PACIFIC MERMAID. MEASURED 78.5" T2T ON 3/26/17 AT LESS THAN 3 YEARS OF AGE. SELLER PAYS FOR SHIPPING ON 10 STRAW LOTS. SEMEN IS LOCATED AT HOFFMANS IN LOGAN, UTAH. MORE INFO AT [WWW.RUNNINGNLONGHORNS.COM](http://WWW.RUNNINGNLONGHORNS.COM).



**#47**

**LOCO  
BUENO**

**RIDGE POINT  
LONGHORNS**

**DOB:** 07/31/2014

COWBOY UP CHEX

COWBOY CHEX  
BL RIO CATCHIT

**TLBAA:** # BAI90093

JH POCO DO

JH BOONE AND CROCKETT  
BL POCO BOO

**BREEDING:** BULL

**COMMENTS:** BIG HORNED, BIG BASED, UNIQUELY COLORED COWBOY UP CHEX SON. HE HAS PERFECT LATERAL HORN SET, ALL OF HIS NEW GROWTH WILL ADD TIP TO TIP. HE WILL BE 3 YEARS OLD IN LATE JULY 2017. VERY GENTLE, WE HAVE USED HIM ON ALL OF OUR TOP HEIFERS. UPDATED MEASUREMENT ON SALE DAY.

## ***LODGING***

***YAMHILL - 5-10 MINUTES FROM THE RANCH***

YAMHILL VINEYARD B&B 503.662.3840

***CARLTON - 10 MINUTES FROM THE RANCH***

THE CARLTON INN B&B 503.852.7506

RR THOMPSON HOUSE B&B 503.852.6236

***DUNDEE - 25 MINUTES FROM THE RANCH***

IN AT RED HILLS 503.538.7666

FRANZISKA HAUS B&B 503.887.0879

***NEWBERG - 20-25 MINUTES FROM THE RANCH***

LE PUY A WINE VALLEY INN 503.554.9528

THE ALLISON INN & SPA 877.294.2525

CHEHALEM RIDGE B&B 503.538.3474

BEST WESTERN NEWBERG INN 503.537.3000

SHILO INN SUITES - NEWBERG 503.537.0303



big table farm

a winemaker and an artist  
doing a little bit every day  
towards our dream —



wine for your table at [www.bigtablefarm.com](http://www.bigtablefarm.com)

# Rough Shod Ranch

*Lot # 15*

*The Wilson's*

*PO Box 2014*

*Dale, OR 97880*

*541.421.3767*

*For the joy of breeding  
Longhorns*



DANIEL & ANGELINA FEY

PO BOX 159

YAMHILL, OR 97148

**JUNE 10, 2017**